

V1000 VACUUM VALVE SERIES

Model V1085-1

• 1" Size Vacuum Seal-off Valve

FEATURES

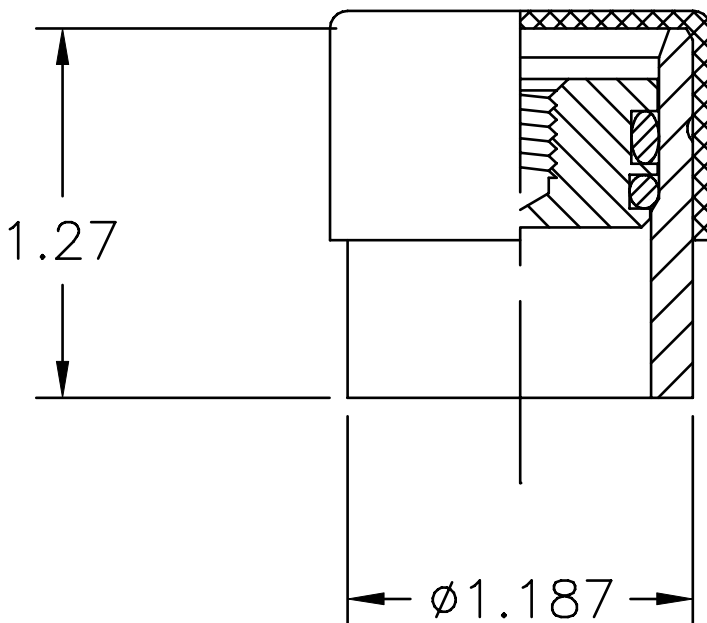
- Compact, Vacuum Tight
- Excellent Capacitance
- Positive Pressure Relief
- Cap (Plastic)
- Plug (Brass)
- Body (304 SST)
- Available with Integral TC port
- Use with Valve Operator Mode V1085-2

OPERATING SPECIFICATIONS

- SERVICE: High Vacuum.
- PRESSURE: 1×10^{-8} TORR Vacuum up to 15 PSIG Positive.
- TEMPERATURE: +150°F TO -60°F.
- LEAK RATE: 1×10^{-8} STD. CC GHe/SEC. (Seal Permeability).
- CONNECTION: Weld Junction Is Standard. Thread And Flange Junctions Available On Special Request.

APPLICATIONS

- Piping and Flexlines
- Vacuum Insulated Piping Systems



CRYOGENIC VALVES and VACUUM COMPONENTS

sales@cryocomp.com ▼ 276.728.2064 ▼ www.cryocomp.com

a division of Cryofab, Inc.

